

# New Copper-Zinc Projects in Finland



**AVRUPA**  
MINERALS

**TSX.V: AVU**  
**FRANKFURT: 8AM**  
**US OTC: AVPMF**

# Avrupa Summary

- **Successful project opportunity generator** with focus on established historical mining districts in politically stable European jurisdictions;
- **Ongoing, fully partner-funded Alvalade JV Project in Portugal** – drilling at Sesmarias copper-zinc massive sulfide system;
- **Ongoing, fully partner-funded Slivova Gold Project in Kosovo** – continuing development towards Kosovo's first gold-silver mine;
- **New acquisition in Finland** – 4 copper/zinc projects now
  - Early-stage brownfields and greenfields exploration in historic mineral districts
  - Known Cu-Zn mineralization present within project licenses, including small, historic mineral resources in three locations – mineralization appears to be extendable at all locations;
  - Drill-ready targets on two licenses => more coming!

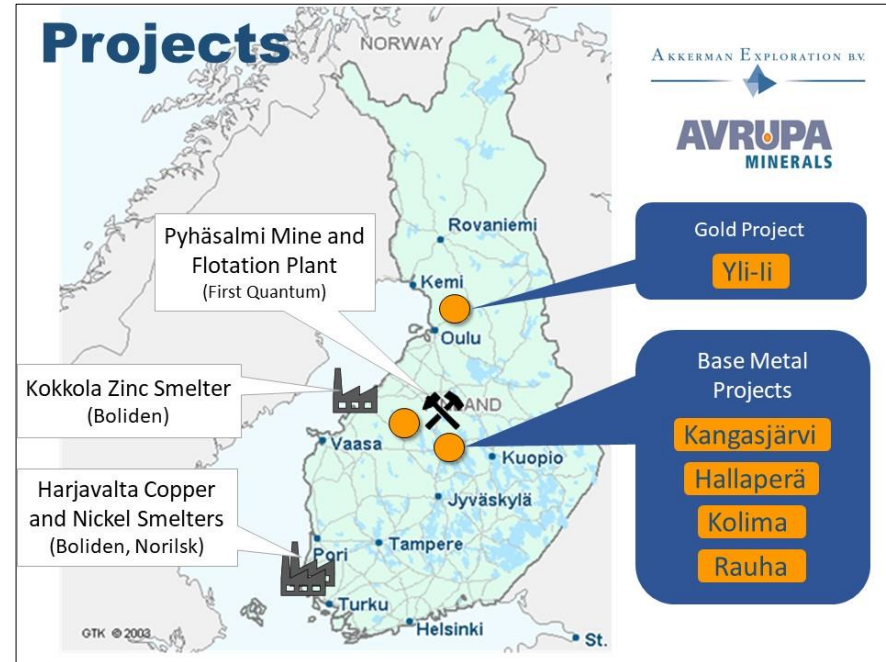
# Why Finland

---

- Established, well-accepted mining industry with international producers in numerous districts;
- Regulations are straight forward, manageable, and consistent; properly and fairly enforced;
- Costs are known, nothing hidden;
- Licensing procedure straight forward and comprehensive, with holding fees going directly to the landowners;
- Production possible and welcomed in most regions;
- Social and environmental licensing important facet of all interactions, but rational and acceptable ESG standards.

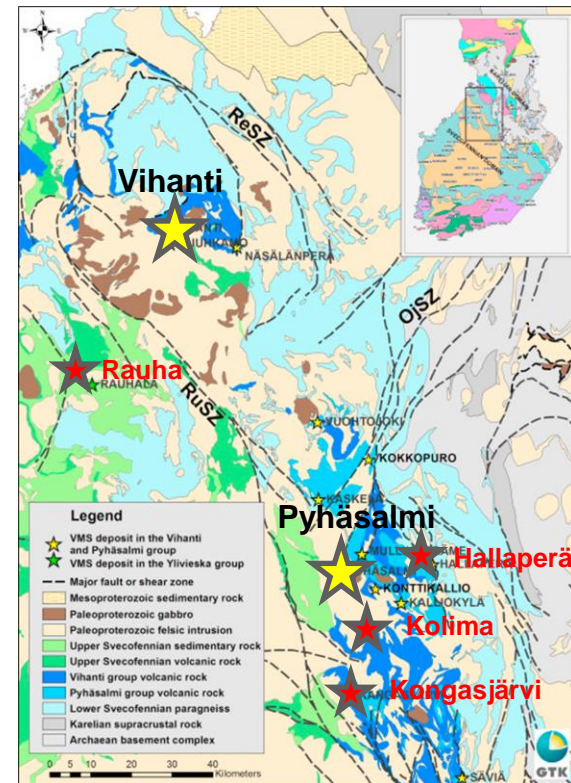
# Base Metals – Why Pyhäsalmi Cu/Zn District

- Lots of space for new discoveries in long-established Cu-Zn mining district;
- Strong mining infrastructure already in place, including working concentrator;
- Many under-explored prospects with known mineralization;
- A lot of low-cost data from historic work, including well-stored historic core available for re-logging and sampling;
- Large international mining company exploring in district; potential JV partner already lurking in the area, others actively looking.

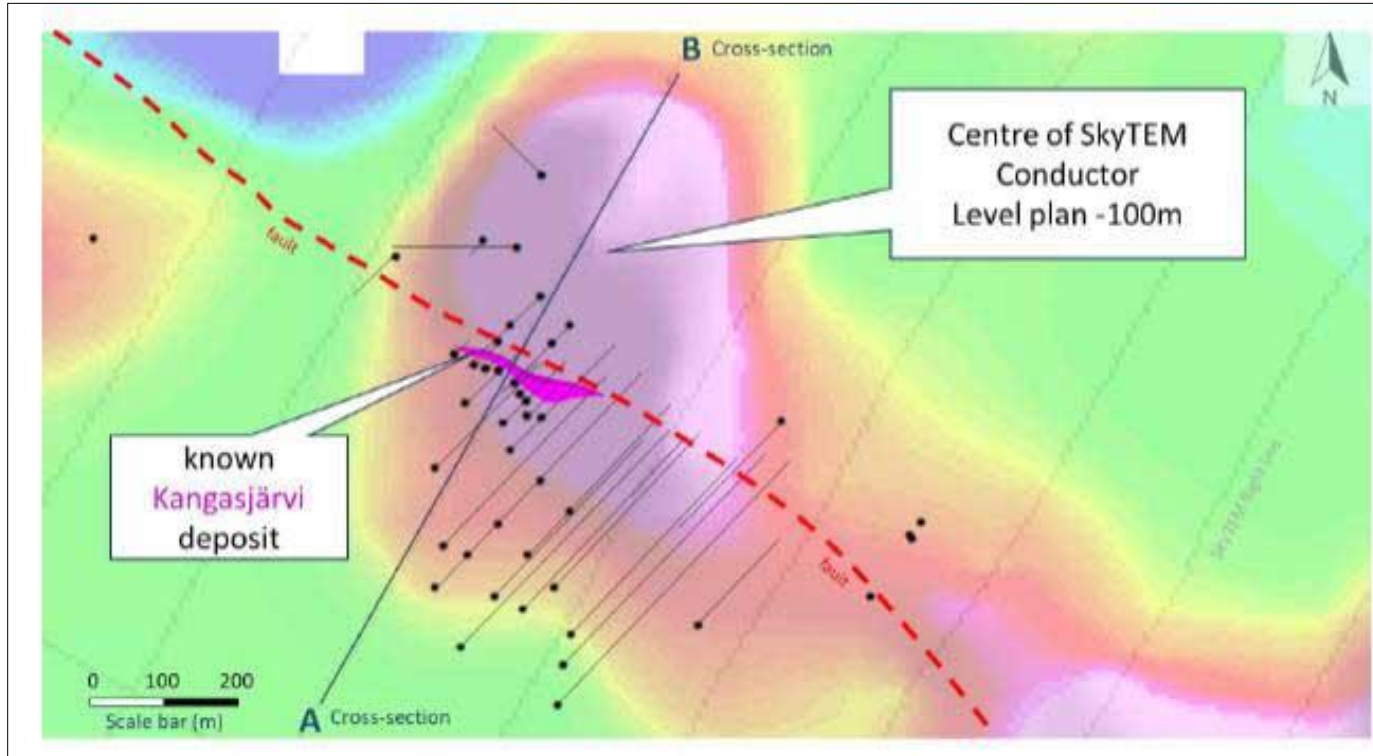


# 4 Cu-Zn Properties in Pyhäsalmi District

- **Kangasjärvi** – Former producing zinc mine; mineralization open at depth and along strike; obvious geophysical targets; large EM anomaly near old mine, but in unexplored area; other known mineral prospects. [License granted.](#)
- **Hallaperä** – Covers known massive sulfide mineralization; +1 kilometer strike length, 2-18 meters thickness; no exploration downdip below 200 meters from surface. [License granted.](#)
- **Kolima** – Disseminated, bedded Zn/Cu mineralization in distal massive sulfide setting => Strong geophysical anomalies target the massive zones? [Application in process.](#)
- **Rauha** – New application near historic Vihanti Mine; covers known massive sulfide mineralization; two lenses up to 6 meters thick. [Application in process.](#)

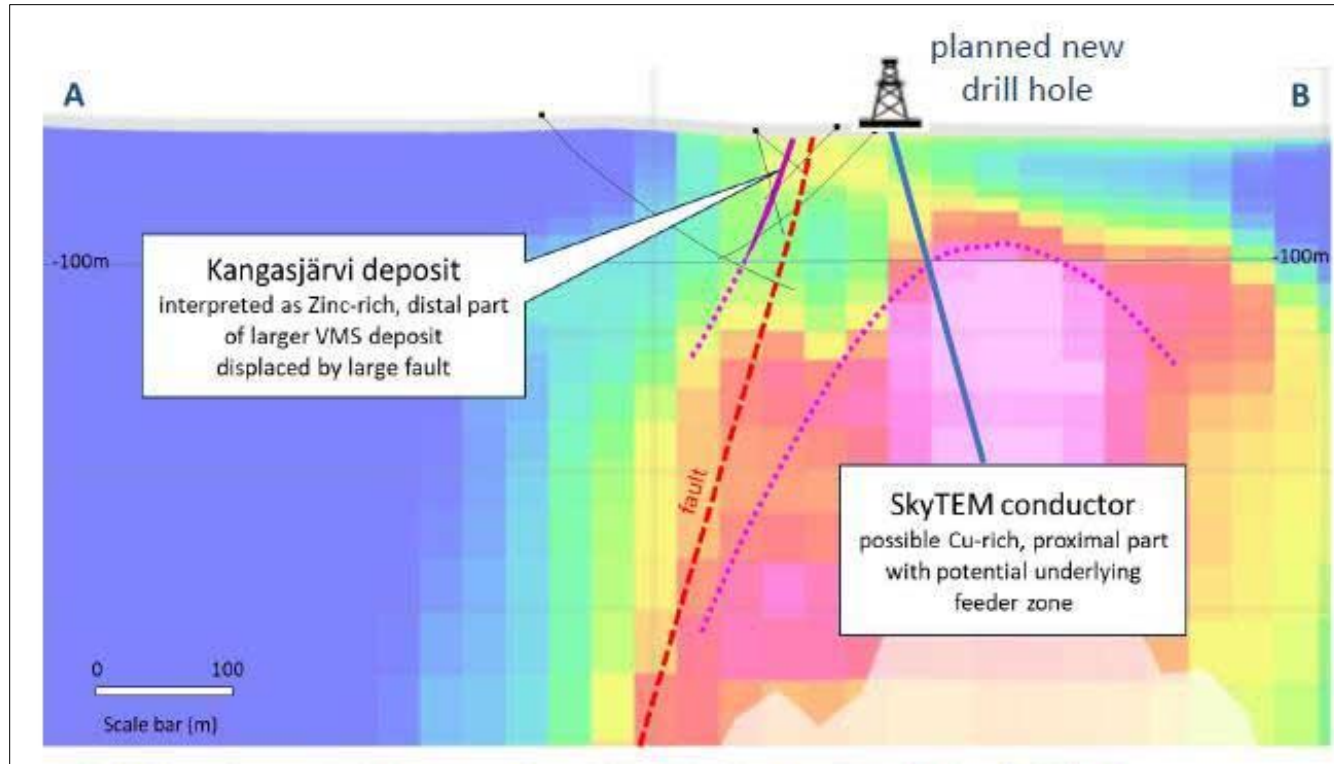


# Primary Drill Target at Kangasjärvi



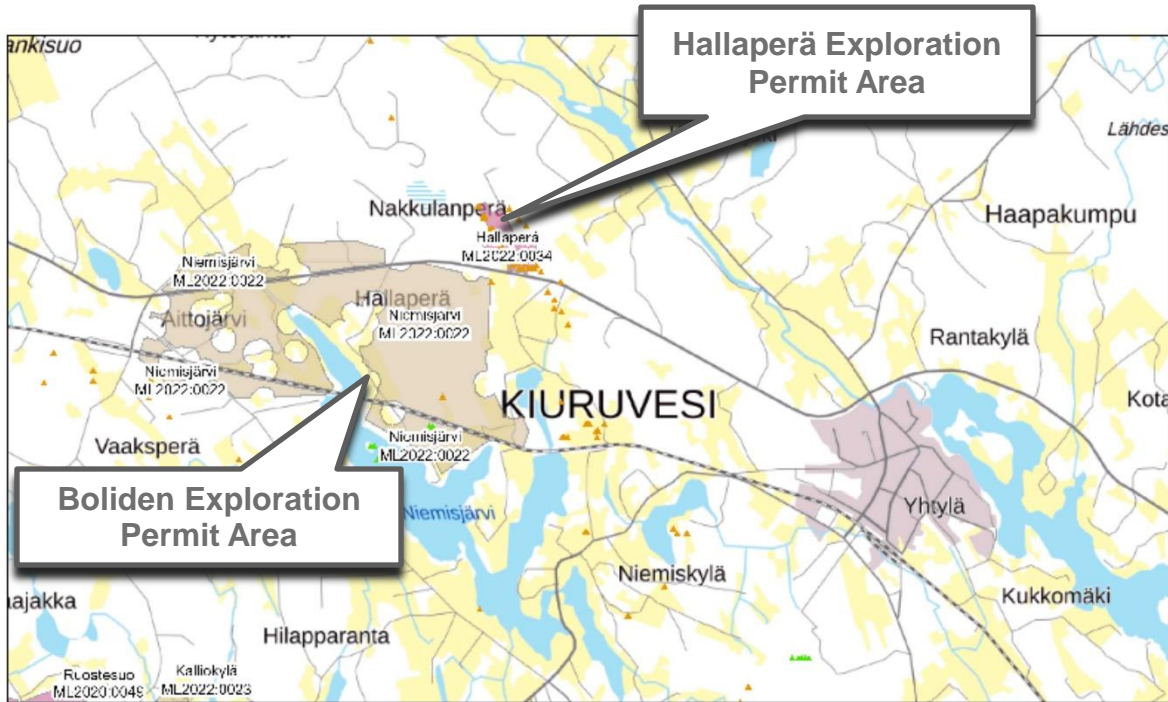
Plan view conductivity map showing large unexplored anomaly located northwest of historic Kangasjärvi Mine.

# Primary Drill Target at Kangasjärvi

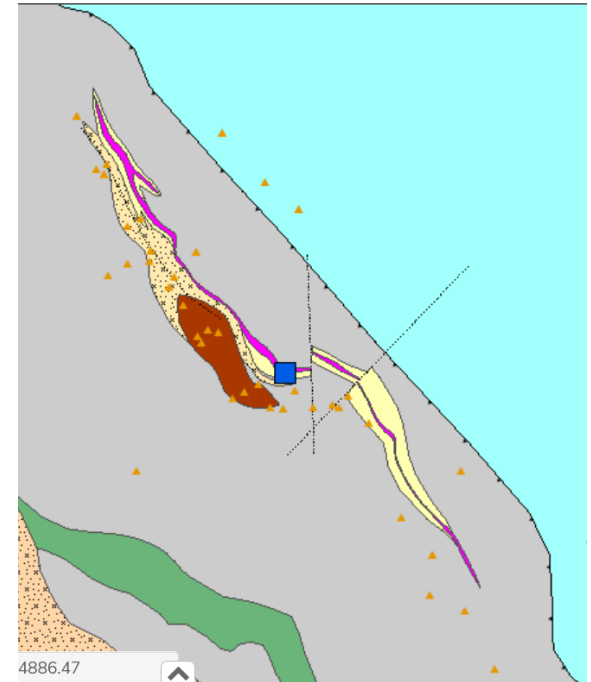


Kangasjärvi conductor in cross-section with main target to the right of large fault (in red). Old Kangasjärvi Mine to left of large fault could be “tail” of main deposit separated by faulting.

# Hallaperä VMS Prospect

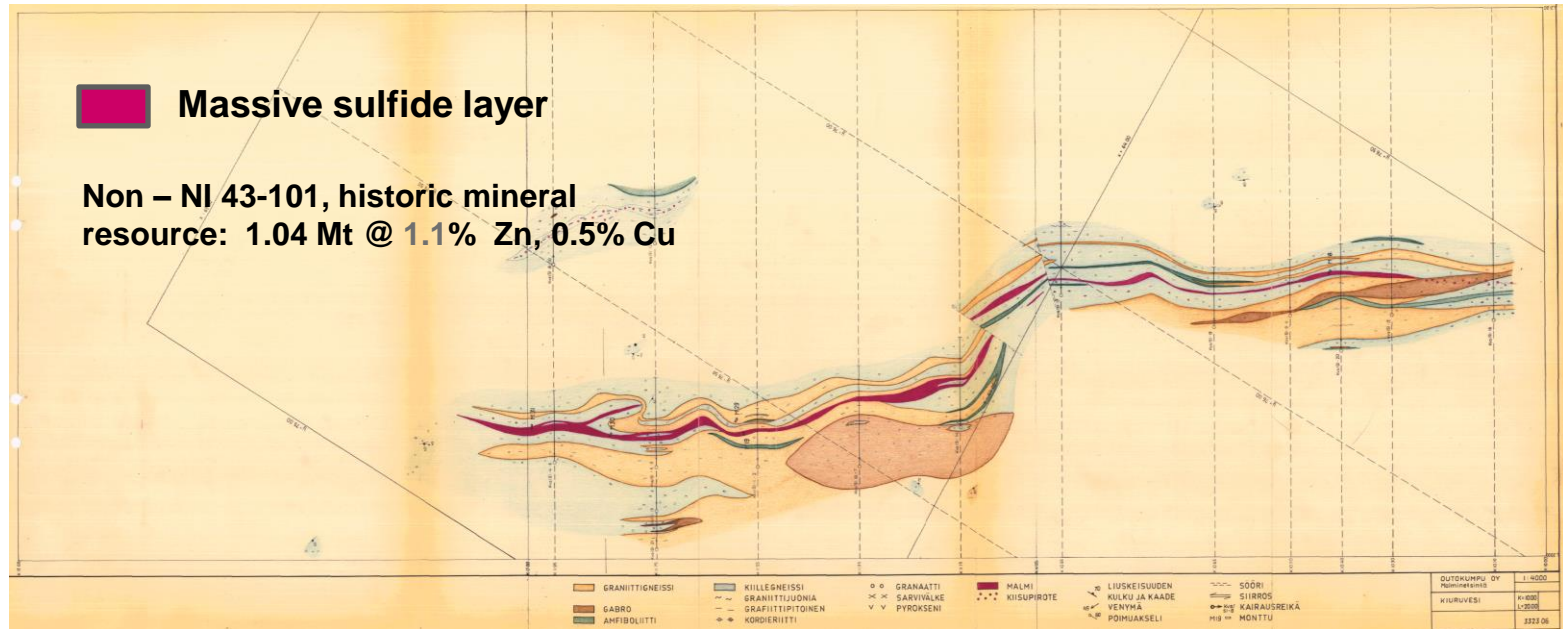


Location of Hallaperä permit



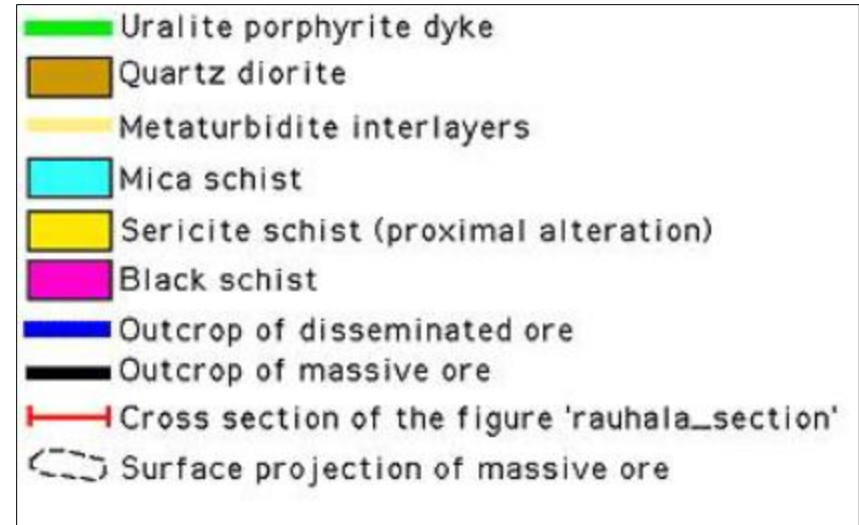
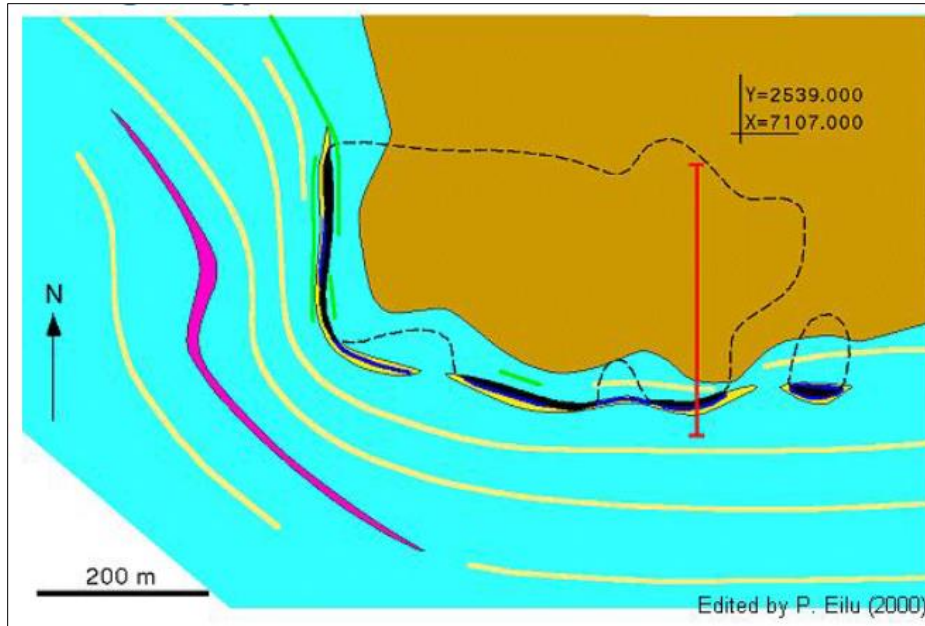
Plan view of the deposit, > 1.5 km  
pink: Massive Ore layer

# Hallaperä VMS Prospect



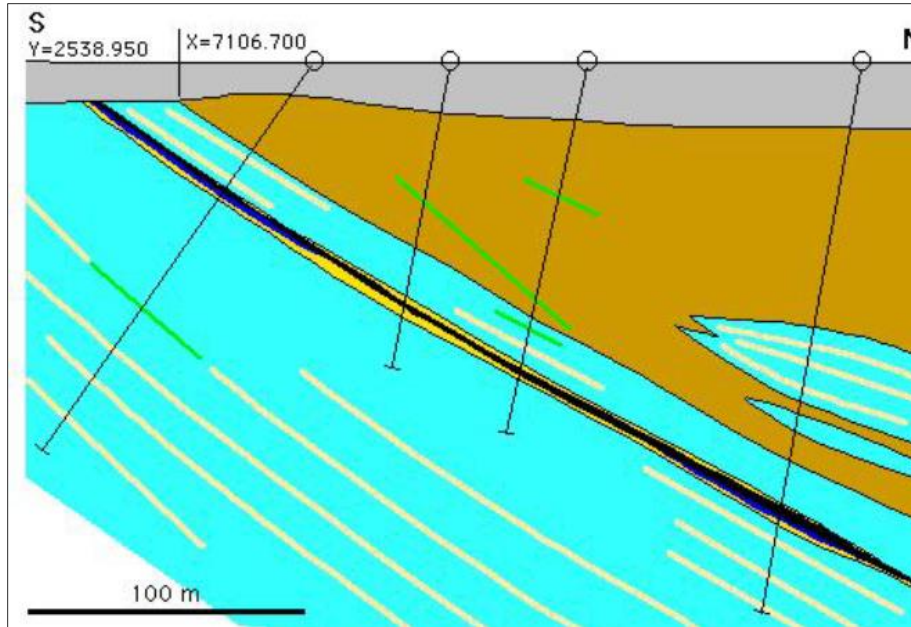
- Original geological map Hallaperä VMS deposit, 1967
- Length 1500 m, thickness 2-18m; **Open at depth below 200 m**
- Most recent drilling in 1990 intersected 1.85m @ **1.72 % Cu, 1.7 g/t Au and 44 g/t Ag**

# Rauha Massive Sulfide Prospect



Plan view of Rauha massive sulfide prospect, Vihanti District.  
Section line in red.

# Rauha Massive Sulfide Prospect



Section view of Rauha massive sulfide prospect, Vihanti District.

- Discovered in 1985.
- Length 590 m, thickness up to 6 m.
- Speculative Sedex-type deposit, rather than VMS deposit
- Historic mineral resource (non – NI 43-101): 1.7 mt @ 1.3% Cu, 5% Zn, 0.4 g/t Au, 53 g/t Ag

# Plans for 2024

- Continue acquisition of all available pertinent data not already in hand, compilation into existing database; review and prioritize within licenses;
- Selected core re-logging and sampling at Hallaperä, Rauha, and Kangasjärvi;
- Recent review of EM data in the Kangasjärvi Mine area suggests a new and unexplored target close to the old mine => prepare for drilling;
- Upgrade other known occurrences within the Kangasjärvi license to targets;
- New applications, follow Kolima license issuing process;
- Continue social and environmental licensing in accordance with regulations and “good neighbor” ESG values.
- **GOALS** => Develop first-pass generation of drill targets on at least 1-2 projects and DRILL!

# Summary

---

- Mining friendly Finland is a great place to explore;
- Avrupa acquires four new Cu-Zn projects well-located in historic mineral districts and one Au project in developing greenstone belt district;
- Historic mineral resources at three locations; along with other prospects containing known mineralization;
- Ready-to-go Finnish exploration company in safe jurisdiction;
- Experienced and successful operator in Finland and elsewhere in Europe;
- Potential JV partners already in the area, along with increasing competition;
- New life/excitement for Avrupa; re-stocking the exploration pipeline!